



BEYOND IN-ROOM

**COMFORT AND SAVINGS**

# GLOBAL SECURITY

## CONTENTS

THE COMPANY VINGCARD ELSAFE	3
WHY ENERGY MANAGEMENT SOLUTIONS?	4
Energy Savings – Improve your bottom line	
Ensure Guest Comfort	
Improve Your Green Initiatives – Contribution to reduce global warming impact	
Service	
BENEFITS OF ORION BY VINGCARD ELSAFE	6
SYSTEM COMPONENTS	7
WIRELESS ONLINE NETWORK	8
VISIONLINE BY VINGCARD LOCK COMPATIBILITY	10
FEATURES COMPARISON TABLE	11

# PARTNER

## THE COMPANY VINGCARD ELSAFE

Since revolutionizing the hospitality industry in 1979 with hotel security solutions, VingCard Elsafe has continued to lead the market by continuously introducing innovations to the industry. VingCard Elsafe is dedicated towards providing electronic security solutions to the hospitality industry and facilities where people sleep away from home, and is recognized as the established worldwide leader within the industry.

We are where you are. With our sales force, covering all corners of the world, we have secured thousands of properties and millions of rooms. VingCard Elsafe is your true global security partner, dedicated to offer you advanced security solutions and peace of mind for both hospitality providers and their guests.



# WHY ENERGY MANAGEMENT SOLUTIONS?

Your key to new savings, comfort and peace of mind

## Energy Savings – Improve your bottom line

Today, energy is the second highest cost for the hospitality industry. Most of this cost is wasted keeping guestrooms A/C at full speed, even though the guest is not in the room for most of the day.

An intelligent Energy Management Solution will allow you to increase the efficiency of your A/C system and therefore dramatically reduce your energy bill and improve your bottom line.



## Ensure Guest Comfort

Reducing energy cost should not compromise your guests' comfort. You can't allow guests to find their rooms either too warm or too cold when they return. By completely switching off all in-room electricity, hoteliers will increase savings but can also compromise your guests' comfort.

An intelligent Energy Management Solution will take control of the room temperature when the rooms are not occupied, never allow to be either too warm or too cold. As soon as guests return to their rooms, the system automatically returns to the guest temperature settings.



## Improve Your Green Initiatives – Contribution to reduce global warming impact

Environmentally friendly initiatives are becoming a critical factor in the hospitality industry. These concerns are felt by guests and hotels. Guests expect to find environmental actions within the hotel in order to help reduce global warming: from re-using towels to water consumption and finally recycling plastic keycards.

Optimizing the use of A/C systems in your hotel dramatically reduces overall energy spending and helps you better position your property as environmentally-friendly.

Think Environment, Think Orion.



## Service

Service has always been an important part of our offering. Wherever you are located and whatever kind of product you use, we provide support and guidance.

VingCard Elsafe's sales and support organization spans the globe. This allows our valued customers to enjoy the benefits of our worldwide resources, along with the convenience of local service and support.

Committed to a partnership with our customers in the hospitality industry, VingCard Elsafe believes that every customer is a customer for life. Our installation and training programs demonstrate this commitment. Operated on a 24-hour, 365-day basis, technical support is always at hand to answer any questions you may have, so you can get the support you need, when you need it.

VingCard Elsafe offers the world's largest support, service and sales organization for your convenience.

At VingCard Elsafe, We listen!

# BENEFITS OF ORION BY VINGCARD ELSAFE

Your key to new savings, comfort and peace of mind

## Standalone scenario:

- Accurate digital room temperature control
- Controls most types of A/C systems "PTAC, FCU, etc."
- Easy-to-use
- Simple installation
- Determines guest presence through motion sensor, door switch and other proprietary technology
- Lowers A/C runtime by determining occupancy
- Designed for new construction and retrofit applications

## Wireless online EMS scenario:

- All standalone benefits plus:
- Real time remote status of:
  - » A/C Runtime
  - » Room occupancy
  - » Orion thermostat
- Preventative maintenance schedules and reports
- Occupancy change notifications
- Occupancy trends and reports
- Savings reports
- Event notifications
- Maintenance alarms
- Device alarms
- Low battery warnings
- Dynamic or static setbacks
- Designed for new construction and retrofit applications
- Remote room temperature adjustment for welcome room set-ups

## Wireless online EMS with VISIONLINE:

- All wireless online benefits plus:
- Seamless integration with VISIONLINE by VingCard electronic locks wireless network
- Uses the same wireless online network from VISIONLINE
- Uses Integrated lock communication to accurately determine occupancy status, no need for door switch
- Manages guest/staff entry to monitor HVAC accordingly
- Integrated remote wireless "Do Not Disturb" function with electronic locks
- And much more...



# SYSTEM COMPONENTS

Your key to new savings, comfort and peace of mind

## Orion Thermostat

- Digital room temperature control including Heat/Cool/3 Fan Speeds
- RF-online wireless communication (Zigbee based) to motion sensor and wireless online VingCard electronic locks
- Integrated humidity sensor
- Modular design – upgradeable for future options
- Simple installation
- Intuitive to use
- Temperature display range: 2 digit display
- Guest control range: 65-90°F / 18-32°C. Configurable
- Configurable “room not occupied”/“room not sold” status timers
- Dimensions: 5.19H X 3.44W X 1.42D in (132H X 87W X 36D mm)



## Orion Motion Sensor

- Identifies movement in order to determine guest presence
- Standalone device
- Battery operated (3AA batteries)
- Ceiling or wall mounted, easy installation and battery change
- RF-online wireless communication (Zigbee based) with Thermostat determining room occupancy and alarms.
- 360 degrees range. 8 meters horizontal, 3 meters vertical
- Dimensions: 4.72 in diameter X 1.74 in H (120 mm diameter X 44mm H)



## Door switch

Door switches, together with motion sensor and thermostat, determine room status change and whether the guest is inside the room or not.

## Scenario 1: Standalone installation

- Standalone thermostat and motion sensor.
- Motion sensor communicates with thermostat via wireless RF.
- Thermostat, together with door switches and motion sensor, determine the guest occupancy in the room and take control of room temperature when guest leaves to save energy and maintain the comfort level upon guest return.

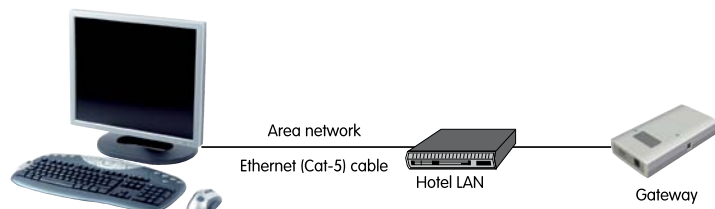




Based on High-security Zigbee open platform

## Scenario 2: Wireless Online Network

- Standalone thermostat and motion sensor. Motion sensor communicates with thermostat via wireless RF.
- RF-online wireless communication between thermostat and gateways.
- Gateways connecting to hotel ethernet network for direct communication with Orion by VingCard Elsafe server.

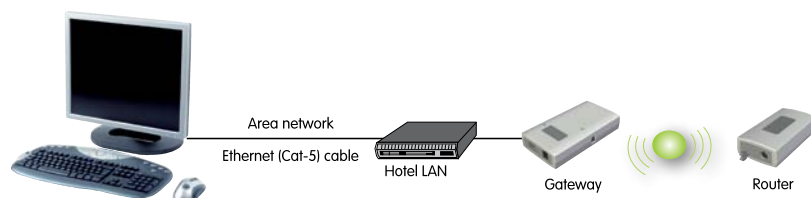


Orion by VingCard Elsafe software



## Scenario 3: Wireless Online Network Together with VISIONLINE by VingCard Electronic Locks

- Standalone thermostat and motion sensor. Motion sensor communicates with thermostat via wireless RF.
- RF-online communication between thermostat and VingCard electronic locks.
- RF-online wireless communication from locks and safes to VISIONLINE network.
- RF-online wireless communication between thermostat directly and with gateways.
- Gateways connecting to hotel ethernet network for direct communication with Orion by VingCard Elsafe server.



Orion by VingCard Elsafe software



## ZIGBEE Network Devices

Zigbee is a wireless standard transmitting data via RF-signals. This standard is aimed at controlling applications with relatively low data rate/power consumption.

### Router technical data:

- Powered by a power adapter (5VDC).
- Low power consumption.
- Easy mounting.
- Flexible setup and configuration.
- UL94-V0 approved.
- Weight: 36 g.
- Flame retardant ABS.
- Color: RAL 7047.
- The router is intended for indoor use only, temperature range +5°C to +50°C (41°F - 122°F). Relative humidity 10% to 90% (non-condensing).
- Dimensions: 40 mm x 105 mm x 20 mm (1 37/64 in x 4 9/64 in x 51/64 in)



### Gateway technical data:

- Automatic adjustment to 10 or 100 Mbit/s networks.
- Powered over ethernet (PoE) or by a power adapter (5VDC).
- Low power consumption.
- Easy mounting.
- Weight: 116 g.
- Flame retardant ABS.
- UL94-V0 approved.
- Color: RAL 7047.
- The gateway is intended for indoor use only, temperature range +5°C to +50°C (41°F - 122°F). Relative humidity 10% to 90% (non-condensing).
- Dimensions: 63 mm x 144 mm x 28 mm (2 31/64 in x 5 43/64 in x 1 7/64 in)





# VISIONLINE BY VINGCARD LOCK COMPATIBILITY

Your key to new savings, comfort and peace of mind

## VISIONLINE by VingCard Lock Compatibility

- Seamless integration with VISIONLINE by VingCard electronic locks wireless network.
- Uses the same wireless online network from VISIONLINE.
- Guest occupancy determined by RF-communication with locks, no need for door switches.
- Manages guest/staff entry to monitor HVAC accordingly.
- Integrated remote wireless "Do Not Disturb" function with electronic locks.
- And much more...

### ■ More Security & Control

- Remote Guest Card Cancellation
- Remote Master Card Cancellation
- Wandering Intruder Report/Alarm

### ■ More Services to your Guests

- Extended Stay without visiting reception
- Change my Room without visiting reception

### ■ More Efficient and Cost Effective Operations

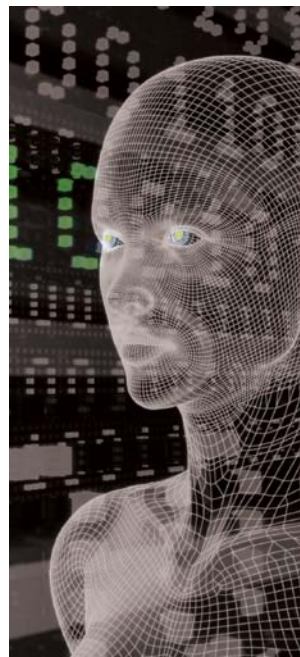
- Online Passage Mode Activation
- Live Tracking of Cards/Users

### ■ More Efficient Front Desk Operations

- Auto Check-out of guest cards
- Block cards per user group/per section

### ■ More Efficient Engineering and Maintenance

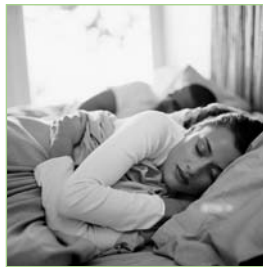
- Remote Audit Trail Report
- Remote Low Battery Report
- Insert Maintenance Report Card



# FEATURES COMPARISON TABLE

Your key to new savings, comfort and peace of mind

Features	Standalone system	Wireless online	VISIONLINE online
Accurate digital room temperature control	✓	✓	✓
Controls most types of A/C systems "PTAC, FCU, etc."	✓	✓	✓
Built-in humidity sensor	✓	✓	✓
Intuitive design provides ease of use	✓	✓	✓
Simple installation	✓	✓	✓
Determines guest presence	✓	✓	✓
Dynamic or static setbacks	✓	✓	✓
Lowers A/C runtime by determining occupancy	✓	✓	✓
Designed for new construction and retrofit applications	✓	✓	✓
Integration with door switches	✓	✓	
Real time remote status of:			
»» A/C Runtime		✓	✓
»» Room occupancy		✓	✓
»» Orion thermostat		✓	✓
Remote control of room temperature		✓	✓
Preventative maintenance schedules and reports		✓	✓
Occupancy change notifications		✓	✓
Occupancy trends and reports		✓	✓
Savings reports		✓	✓
Event notifications		✓	✓
Maintenance alarms		✓	✓
Device alarms		✓	✓
Low battery warnings		✓	✓
Integration with VISIONLINE electronic locks			✓
Utilizes robust secure VISIONLINE network			✓
Uses Integrated lock communication to accurately determine occupancy status, no need for door switch			✓
Manages guest/staff entry to monitor HVAC accordingly			✓
Integrated remote wireless "Do Not Disturb" function with electronic locks			✓



## AT VINGCARD ELSAFE, WE LISTEN



For more information, please contact:

**Europe/Middle East/Africa:**  
E-mail: [emea@vcegroup.com](mailto:emea@vcegroup.com)  
Phone: +47 69 24 51 00

**North America:**  
E-mail: [noram@vcegroup.com](mailto:noram@vcegroup.com)  
Phone: +1 972 907 2273

**Asia/Pacific:**  
E-mail: [aspac@vcegroup.com](mailto:aspac@vcegroup.com)  
Phone: +65 6748 7227

**Latin America:**  
E-mail: [lam@vcegroup.com](mailto:lam@vcegroup.com)  
Phone: +52 55 36 40 12 00

VingCard Elsafe • [info@vcegroup.com](mailto:info@vcegroup.com) • [www.orionbyvingcardelsafe.com](http://www.orionbyvingcardelsafe.com) • [www.vingcard.com](http://www.vingcard.com) • [www.elsafe.com](http://www.elsafe.com)

Specifications may change without notice.